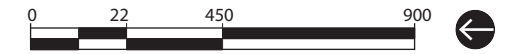


SITE 1: MULTIPURPOSE CREEK TRAIL/OVERALL MASTERPLAN



PLAN KEY

1. SIDEWALK CONNECTION TO FOX CREEK PARK
2. VILLAGE GATEWAY
3. ENHANCEMENTS TO FOX CREEK PARK
4. PUBLIC CREEK ACCESS
5. TRAIL HEAD PARKING
6. PEDESTRIAN/VEHICULAR ACCESS
7. MULTIPURPOSE CREEK TRAIL
8. SIDEWALK CONNECTION ALONG BRIDGE STREET
9. TRAILHEAD PARKING AT FEMA BUYOUT PROPERTY
10. FEMA BUYOUT POCKET PARK
11. FIREHOUSE PARK
12. SIDEWALK CONNECTION FROM SPRING STREET TO LASALLE PARK
13. ENHANCED PEDESTRIAN CONNECTION FROM LASALLE PARK THROUGH CEMETERY IN VILLAGE CORE
14. POSSIBLE FUTURE BIO-RETENTION AREA
15. CREEK CLEAN-UP
16. SCHOHARIE LAND TRUST ISLAND
 - Walking Trails
 - Disc Golf Course
17. POSSIBLE FUTURE ECONOMIC DEVELOPMENT/RECREATIONAL DEVELOPMENT AT COUNTY JAIL SITE



SITE 2: SCHOHARIE LAND TRUST ISLAND



PLAN KEY

- 1. MULTIPURPOSE TRAIL**
- 2. POTENTIAL PEDESTRIAN CONNECTION TO DISC GOLF COURSE AND PROPOSED TRAIL SYSTEM**
- 3. PROPOSED OVERLOOK/PICNIC AREA**
 - Great views of river with farm field backdrop
- 4. OPPORTUNITY TO ACCESS AREAS OF THE ISLAND DURING DIFFERENT TIME OF THE YEAR**
- 5. POTENTIAL FUTURE CREEK ACCESS**
 - Canoe/kayak launch, small parking area, creek overlook, picnic areas, access to island
- 6. POSSIBLE FUTURE DISC GOLF COURSE**
- 7. WOODED ISLAND NATURE TRAILS**
- 8. VEHICULAR ACCESS ROAD TO OVERLOOK AND POTENTIAL CANOE/KAYAK LAUNCH**



SITE 3. SCHOHARIE CREEK ACCESS

PLAN KEY

- 1. MULTIPURPOSE TRAIL
- 2. POTENTIAL PUBLIC ACCESS/TRAIL HEAD PARKING
- 3. WATERFRONT ACCESS AND CANOE/KAYAK LAUNCH
- 4. SCHOHARIE CREEK OVERLOOK AND PICNIC AREAS
- 5. NATURALIZED PLANTINGS WITH 'GATEWAY' SIGNAGE
- 6. PROPOSED OVERFLOW/VISITOR PARKING
- 7. SIDEWALK CONNECTION FROM PUBLIC CREEK ACCESS ALONG BRIDGE STREET



SITE 4: FEMA BUYOUT PARCEL POCKET PARK

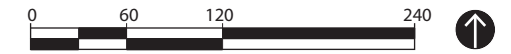


PLAN KEY

- 1. OPEN LAWN SPACE**
- 2. SEAT WALL AND NATURAL STONE PAD**
- 3. BERMED PLANTINGS**
 - Promotes added sense of enclosure and security from road
- 4. LOCATION OF PROPOSED SENIOR HOUSING COMPLEX**
- 5. PROPOSED CROSSWALK WITH FLASHING PEDESTRIAN CONTROLLED CROSSWALK SIGNAGE**
- 6. MONUMENT SIGN WELCOMING VISITORS TO VILLAGE OF SCHOHARIE**
- 7. STORMWATER RUNOFF/BIO-RETENTION AREA**
- 8. NEIGHBORHOOD ACCESS POINT**



SITE 5: FOX CREEK PARK & SIDEWALK EXTENSION



PLAN KEY

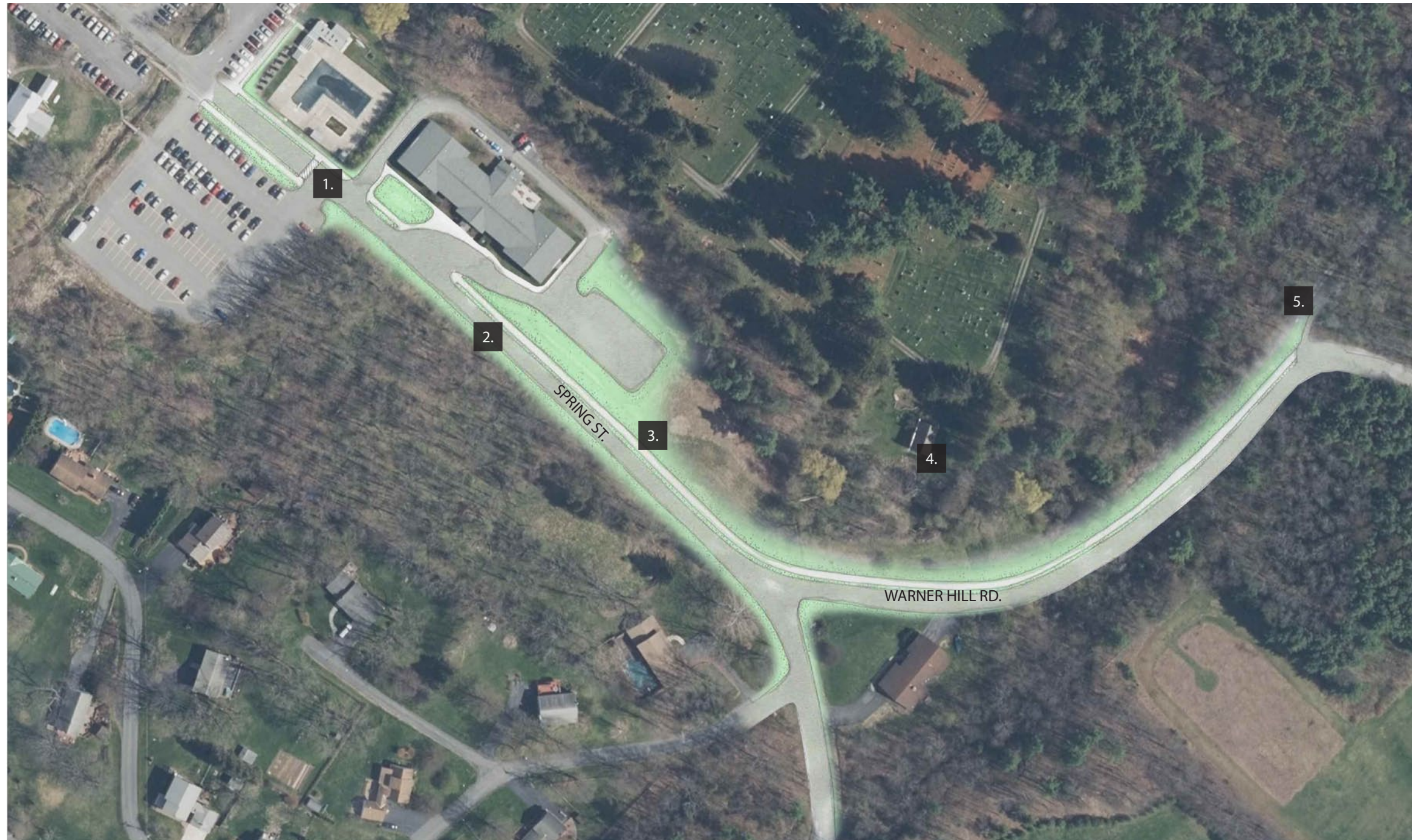
- 1. PROPOSED SIDEWALK CONNECTION INTO VILLAGE
- 2. PROPOSED BATHROOM
- 3. EXISTING PAVILION COMPLEX
- 4. PLAYGROUND PROTECTED BY EXISTING LARGE TREES AND LOW FENCING
- 5. RELOCATED PARKING LOT
- 6. OPEN GREEN SPACE FOR BOTH ACTIVE AND PASSIVE RECREATION/PICNIC AREA/ICE RINK
- 7. FIRE TRUCK ACCESS AND CANOE/KAYAK DROP-OFF
- 8. CANOE/KAYAK ACCESS
- 9. BOULDERS TO REINFORCE THE EXISTING STREAM BANK AND SERVE AS SEATING OPPORTUNITIES
- 10. ENHANCED CONNECTION UNDER BRIDGE
- 11. IMPROVED PARK CIRCULATION THROUGH FORMALIZED PATHWAY
- 12. POSSIBLE INTERPRETIVE EDUCATION OPPORTUNITY AT THE HISTORIC RAIL LINE
- 13. PROPOSED PARKING LOT ADDITION

SITE 6: LASALLE PARK SIDEWALK CONNECTION



PLAN KEY

- 1. PROPOSED SIDEWALK LOCATION
- 2. MINIMUM 3FT. GRASS BUFFER BETWEEN EXISTING ROAD AND PROPOSED SIDEWALK
- 3. PROPOSED SIDEWALK CONNECTION TO LASALLE PARK AND PALATINE HOUSE
- 4. PALATINE HOUSE
- 5. LASALLE PARK



SITE 7: FIREHOUSE CONCEPT A



PLAN KEY

- 1. 10-SPACE PARKING LOT
- 2. PLAYGROUND WITH DECORATIVE FENCE ENCLOSURE
- 3. SPLASH PAD
- 4. OPEN LAWN SPACE
- 5. FENCED-IN DOG PARK
- 6. BASKETBALL COURT
- 7. FORMALIZED WALKWAY
- 8. SECONDARY OPEN LAWN SPACE/PICNIC AREA
- 9. PROPOSED PICNIC PAVILION



SITE 7: FIREHOUSE CONCEPT B



PLAN KEY

- 1. FORMALIZED COMMUNITY ENTRANCE
- 2. LANDSCAPE BUFFER WITH NATURALIZED PLANTINGS
- 3. OPEN PLAY AREA
- 4. SECONDARY OPEN LAWN SPACE/PICNIC AREA
- 5. OPEN LAWN SPACE
- 6. FENCED-IN DOG PARK
- 7. BASKETBALL COURT
- 8. 11-SPACE PARKING LOT
- 9. PROPOSED PAVILION AND BATHROOMS
- 10. PLAYGROUND WITH DECORATIVE FENCE ENCLOSURE
- 11. OPPORTUNITY FOR COMMUNITY FLOWER GARDEN

