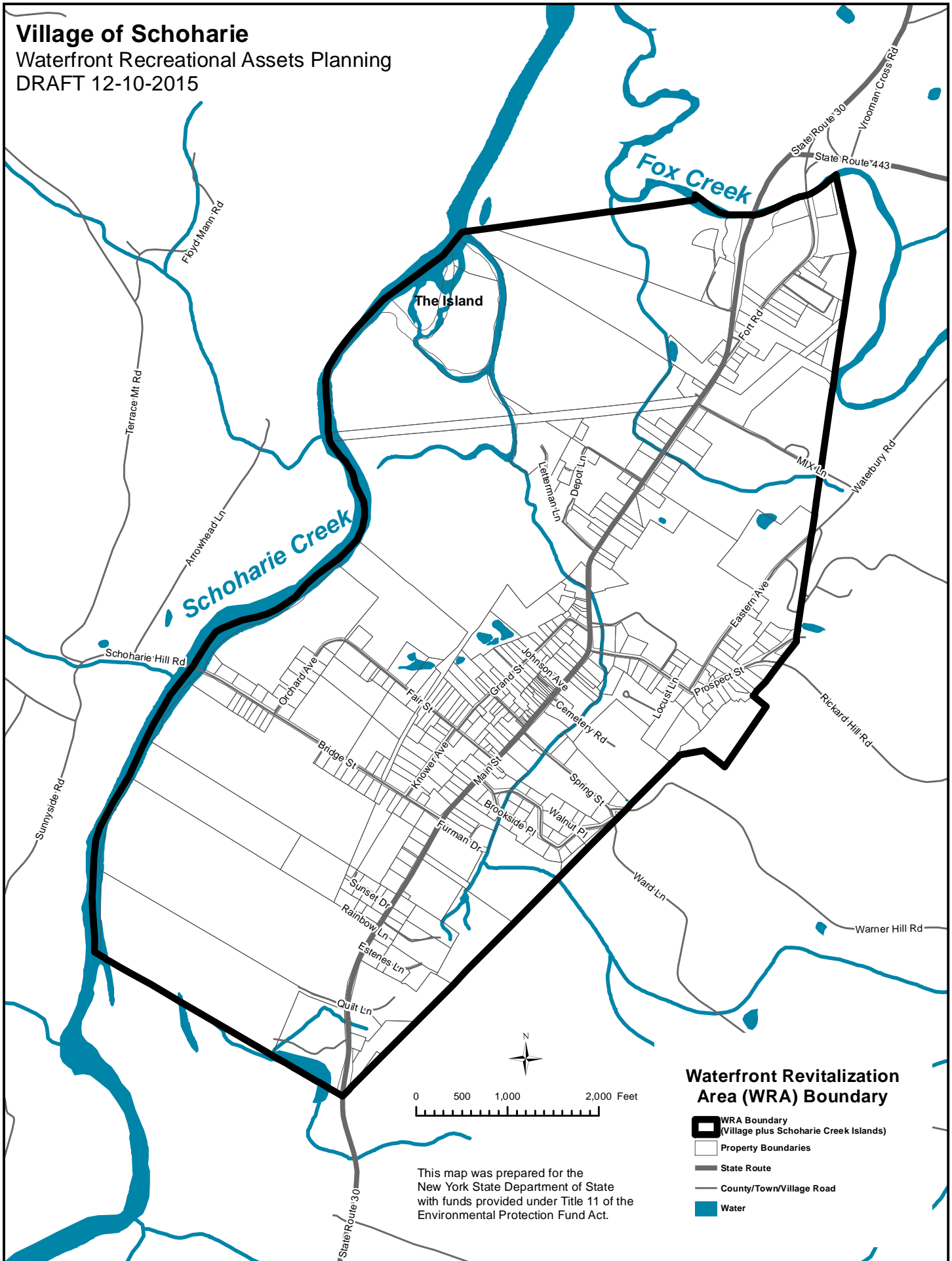


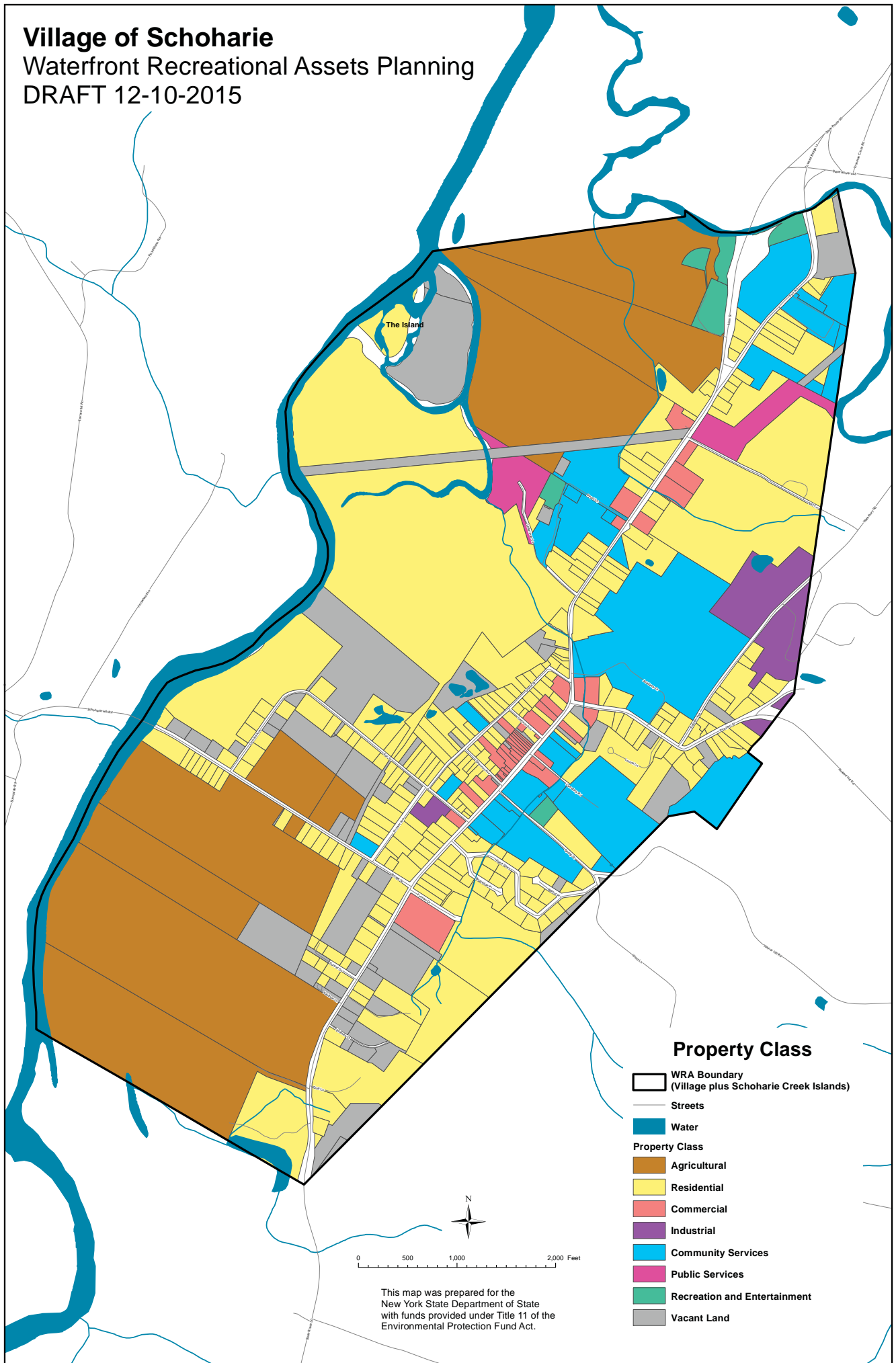
Village of Schoharie

Waterfront Recreational Assets Planning

DRAFT 12-10-2015

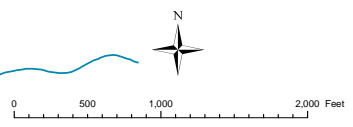


Village of Schoharie
Waterfront Recreational Assets Planning
DRAFT 12-10-2015



Property Class

-  WRA Boundary (Village plus Schoharie Creek Islands)
-  Streets
-  Water
- Property Class**
-  Agricultural
-  Residential
-  Commercial
-  Industrial
-  Community Services
-  Public Services
-  Recreation and Entertainment
-  Vacant Land

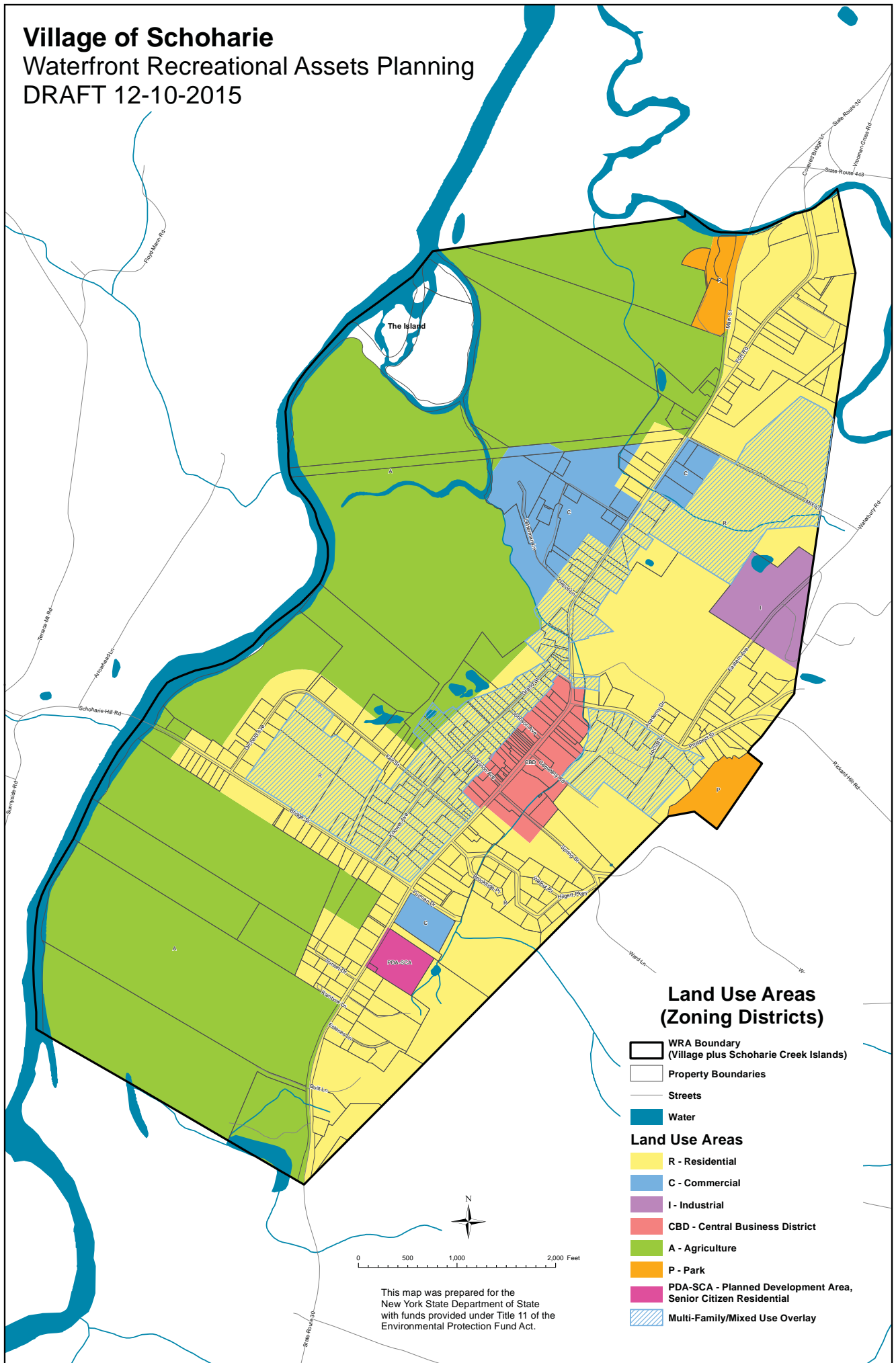


This map was prepared for the New York State Department of State with funds provided under Title 11 of the Environmental Protection Fund Act.

Village of Schoharie

Waterfront Recreational Assets Planning

DRAFT 12-10-2015

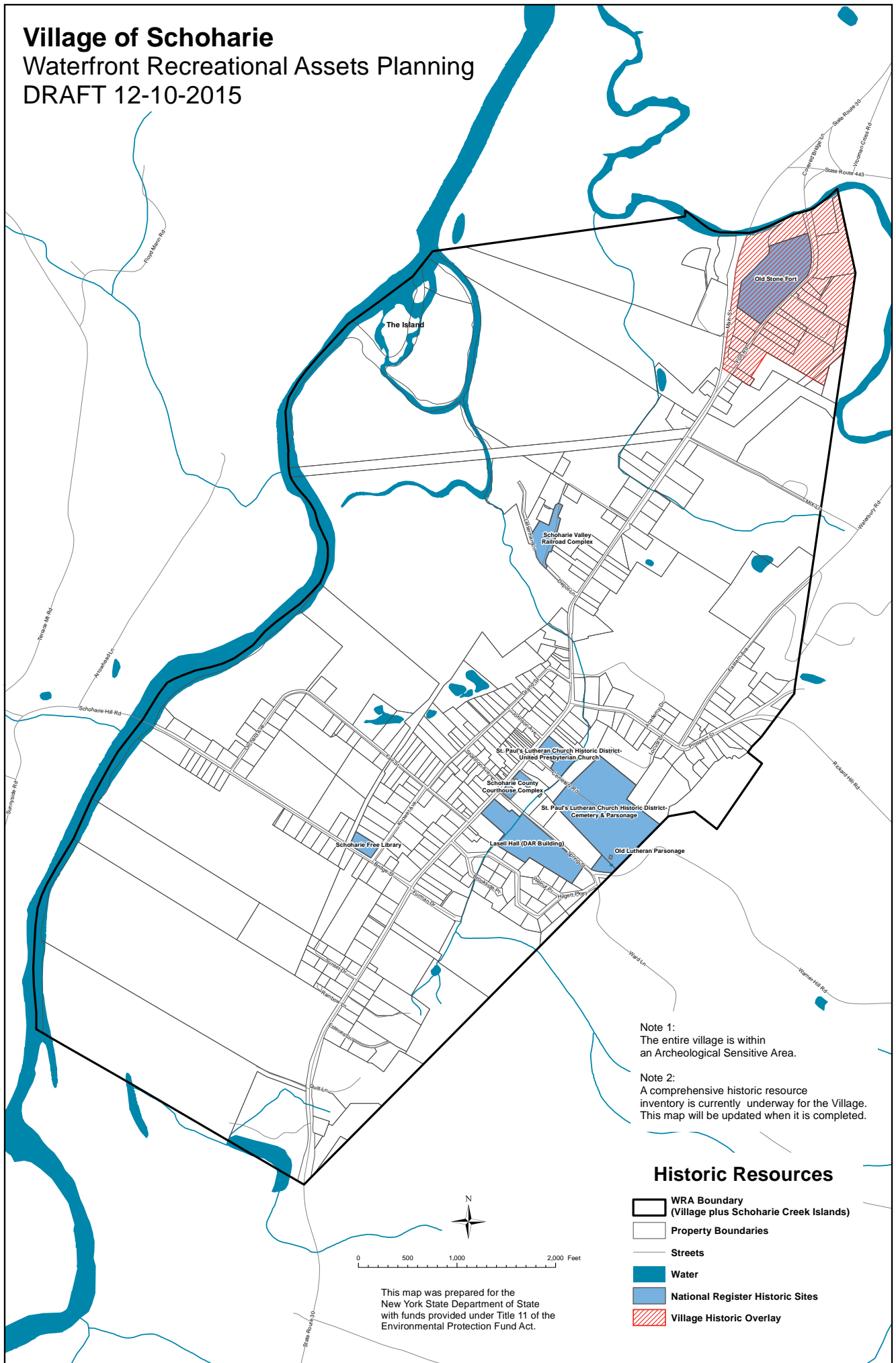


This map was prepared for the New York State Department of State with funds provided under Title 11 of the Environmental Protection Fund Act.

Village of Schoharie

Waterfront Recreational Assets Planning

DRAFT 12-10-2015

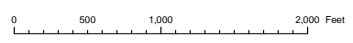


Note 1:
The entire village is within
an Archeological Sensitive Area.

Note 2:
A comprehensive historic resource
inventory is currently underway for the Village.
This map will be updated when it is completed.

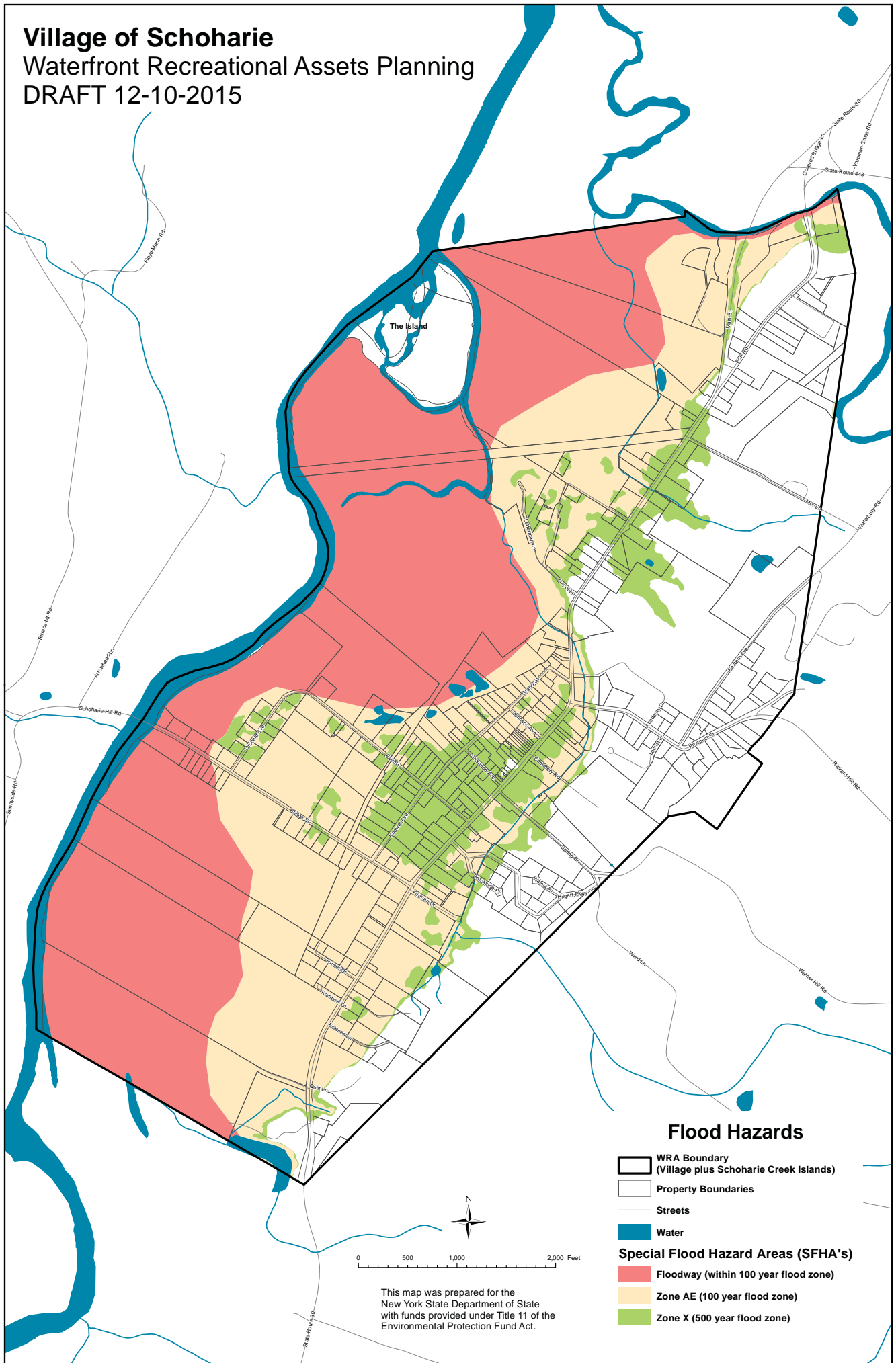
Historic Resources

-  WRA Boundary
(Village plus Schoharie Creek Islands)
-  Property Boundaries
-  Streets
-  Water
-  National Register Historic Sites
-  Village Historic Overlay



This map was prepared for the
New York State Department of State
with funds provided under Title 11 of the
Environmental Protection Fund Act.

Village of Schoharie
Waterfront Recreational Assets Planning
DRAFT 12-10-2015

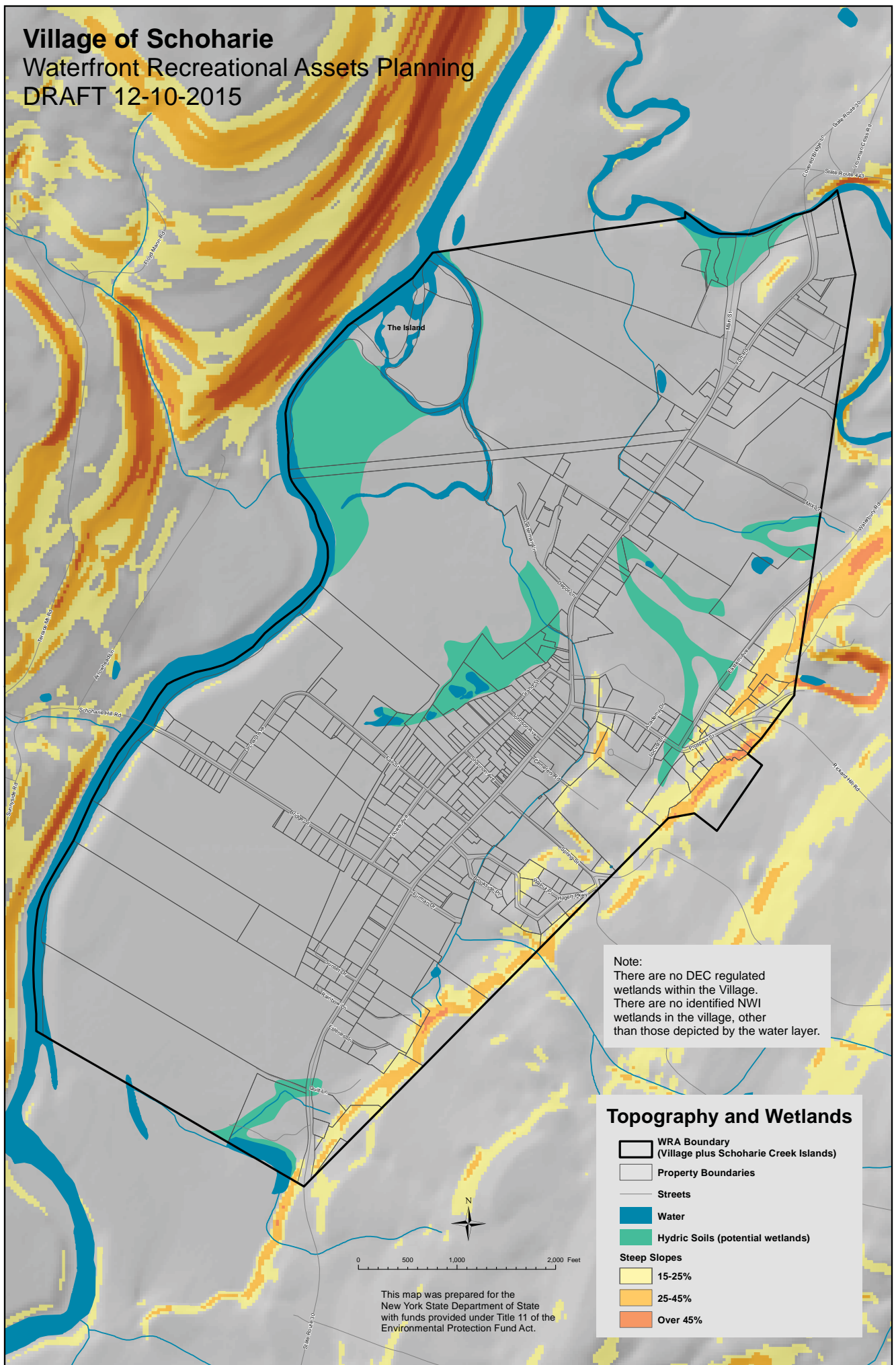


This map was prepared for the
 New York State Department of State
 with funds provided under Title 11 of the
 Environmental Protection Fund Act.

Village of Schoharie

Waterfront Recreational Assets Planning

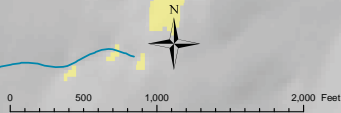
DRAFT 12-10-2015



Note:
 There are no DEC regulated wetlands within the Village.
 There are no identified NWI wetlands in the village, other than those depicted by the water layer.

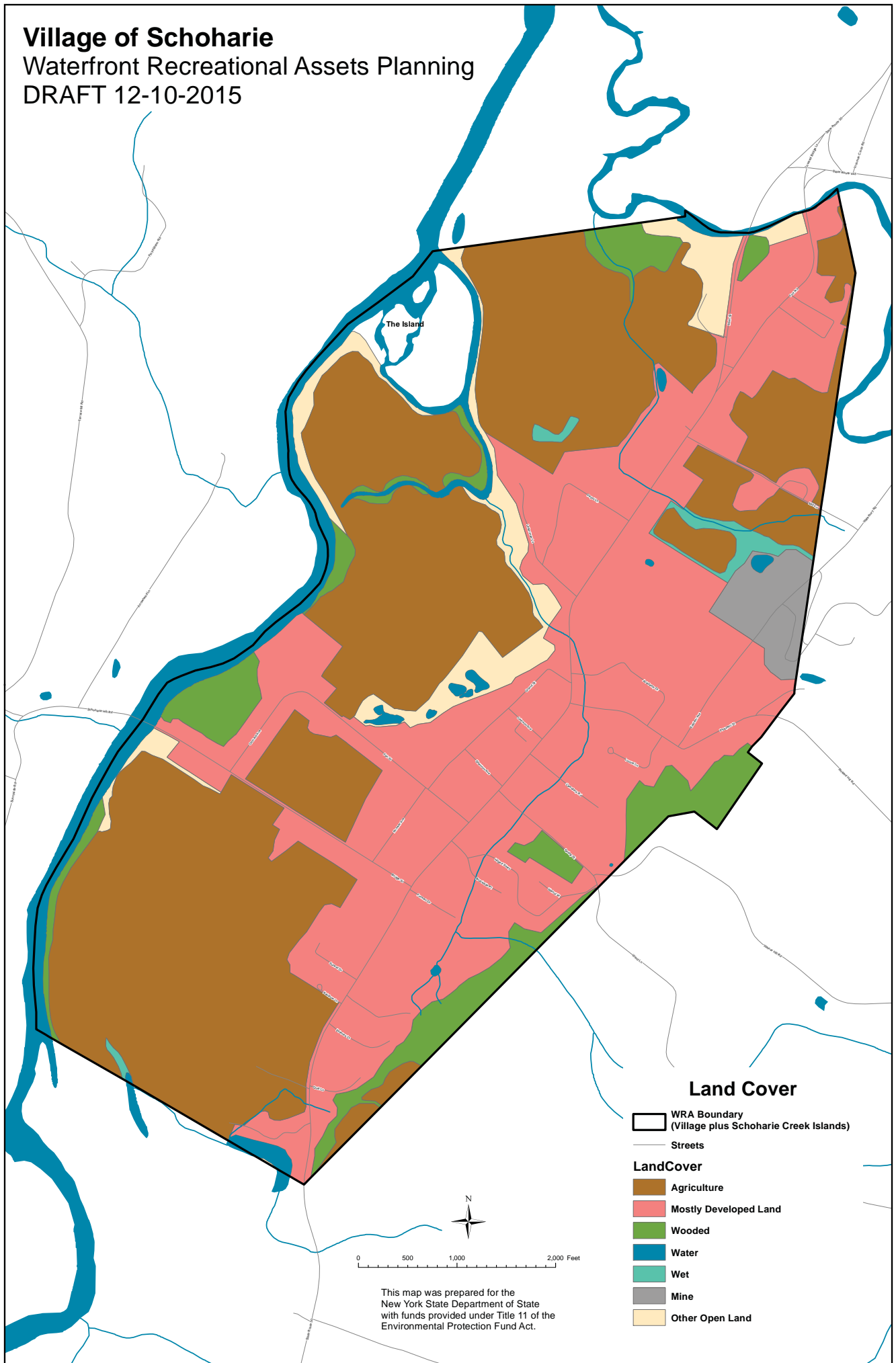
Topography and Wetlands

- WRA Boundary (Village plus Schoharie Creek Islands)
- Property Boundaries
- Streets
- Water
- Hydric Soils (potential wetlands)
- Steep Slopes**
 - 15-25%
 - 25-45%
 - Over 45%












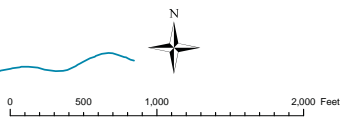
This map was prepared for the New York State Department of State with funds provided under Title 11 of the Environmental Protection Fund Act.

Village of Schoharie
 Waterfront Recreational Assets Planning
 DRAFT 12-10-2015



Land Cover

-  WRA Boundary (Village plus Schoharie Creek Islands)
-  Streets
- LandCover**
-  Agriculture
-  Mostly Developed Land
-  Wooded
-  Water
-  Wet
-  Mine
-  Other Open Land

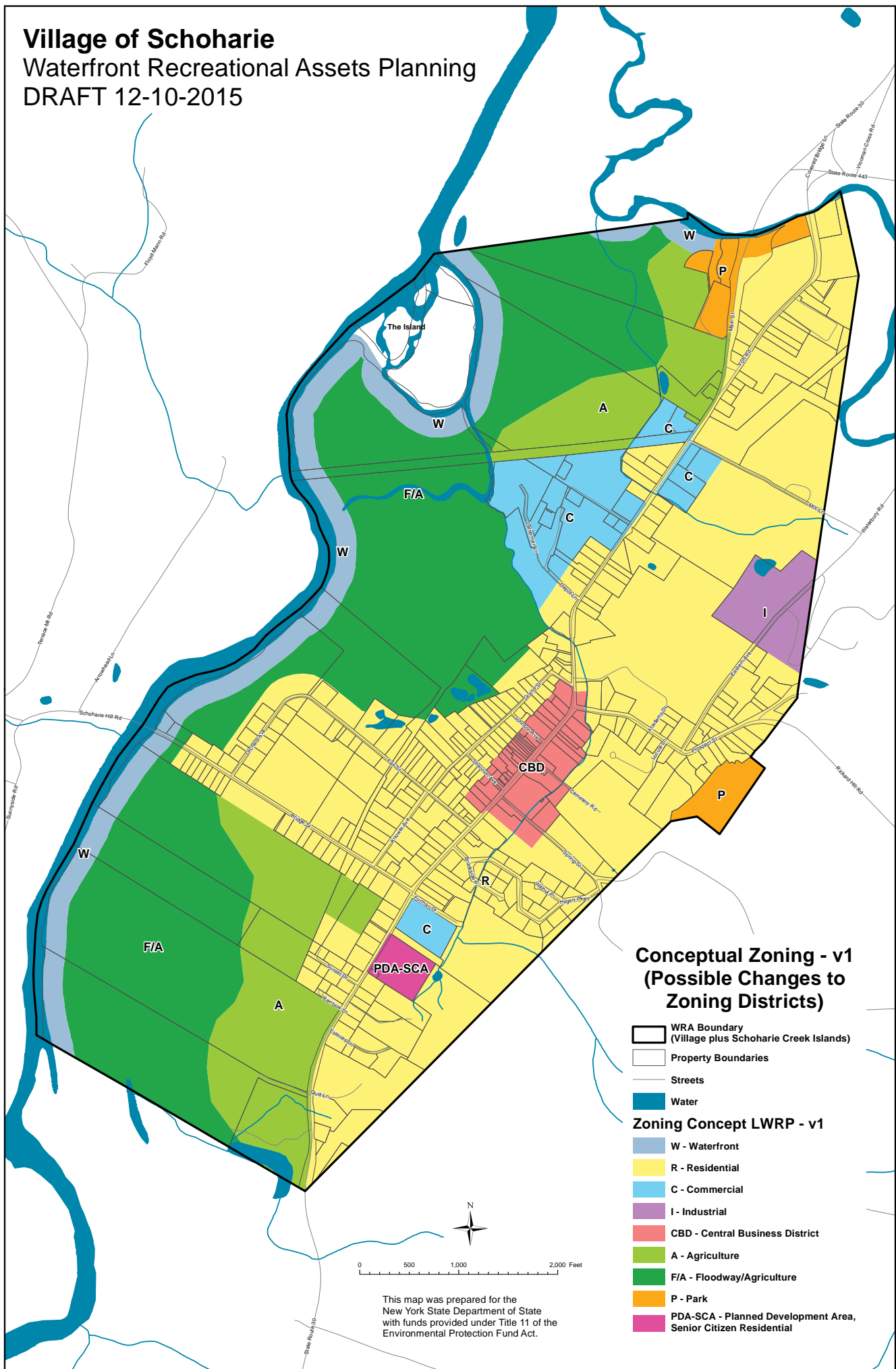


This map was prepared for the New York State Department of State with funds provided under Title 11 of the Environmental Protection Fund Act.

Village of Schoharie

Waterfront Recreational Assets Planning

DRAFT 12-10-2015

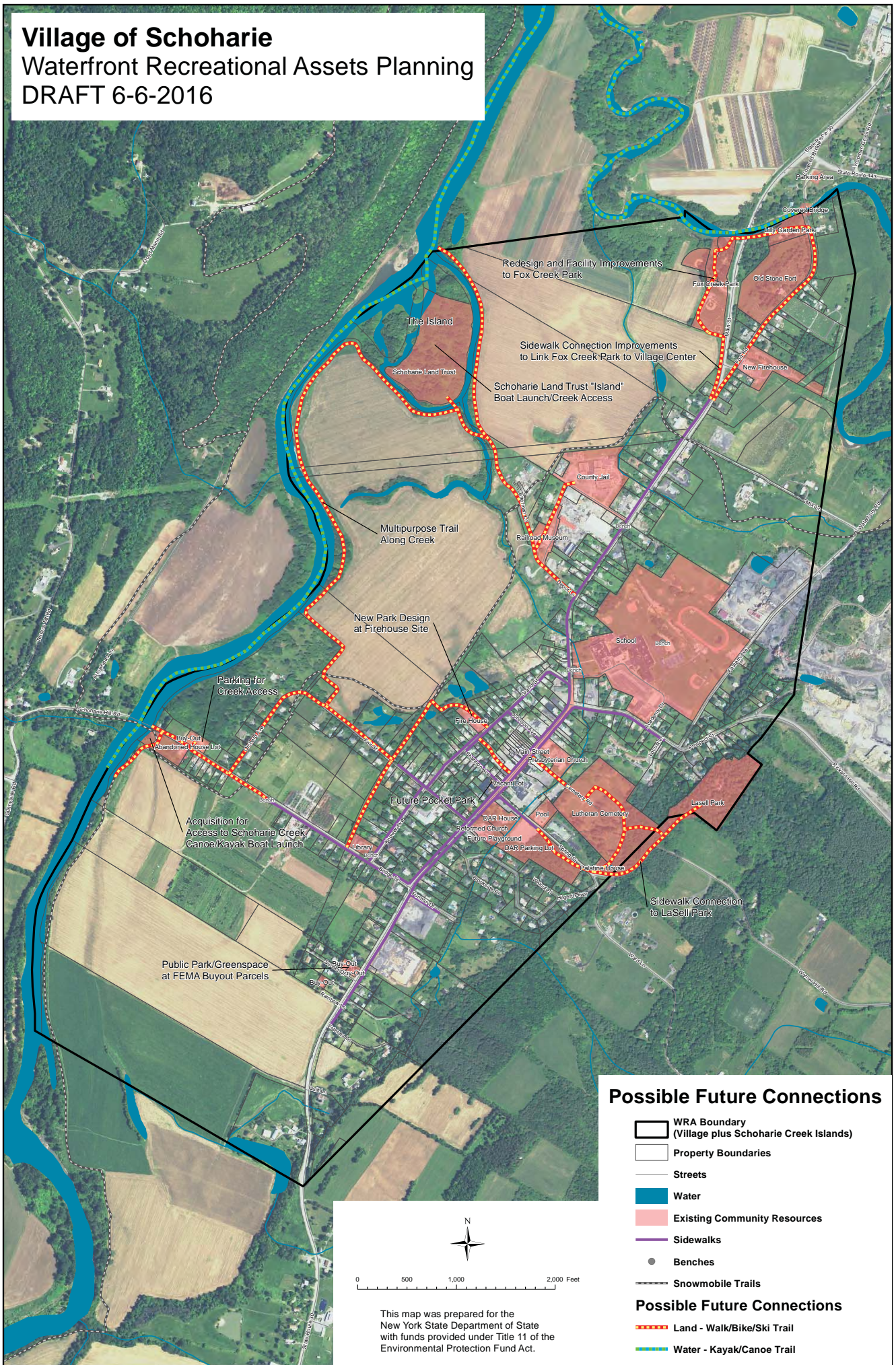


This map was prepared for the New York State Department of State with funds provided under Title 11 of the Environmental Protection Fund Act.

Village of Schoharie

Waterfront Recreational Assets Planning

DRAFT 6-6-2016



Redesign and Facility Improvements to Fox Creek Park

Sidewalk Connection Improvements to Link Fox Creek Park to Village Center

Schoharie Land Trust "Island" Boat Launch/Creek Access

Multipurpose Trail Along Creek

New Park Design at Firehouse Site

Parking for Creek Access

Acquisition for Access to Schoharie Creek Canoe/Kayak Boat Launch

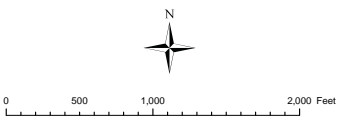
Public Park/Greenspace at FEMA Buyout Parcels

Possible Future Connections

- WRA Boundary (Village plus Schoharie Creek Islands)
- Property Boundaries
- Streets
- Water
- Existing Community Resources
- Sidewalks
- Benches
- Snowmobile Trails

Possible Future Connections

- Land - Walk/Bike/Ski Trail
- Water - Kayak/Canoe Trail

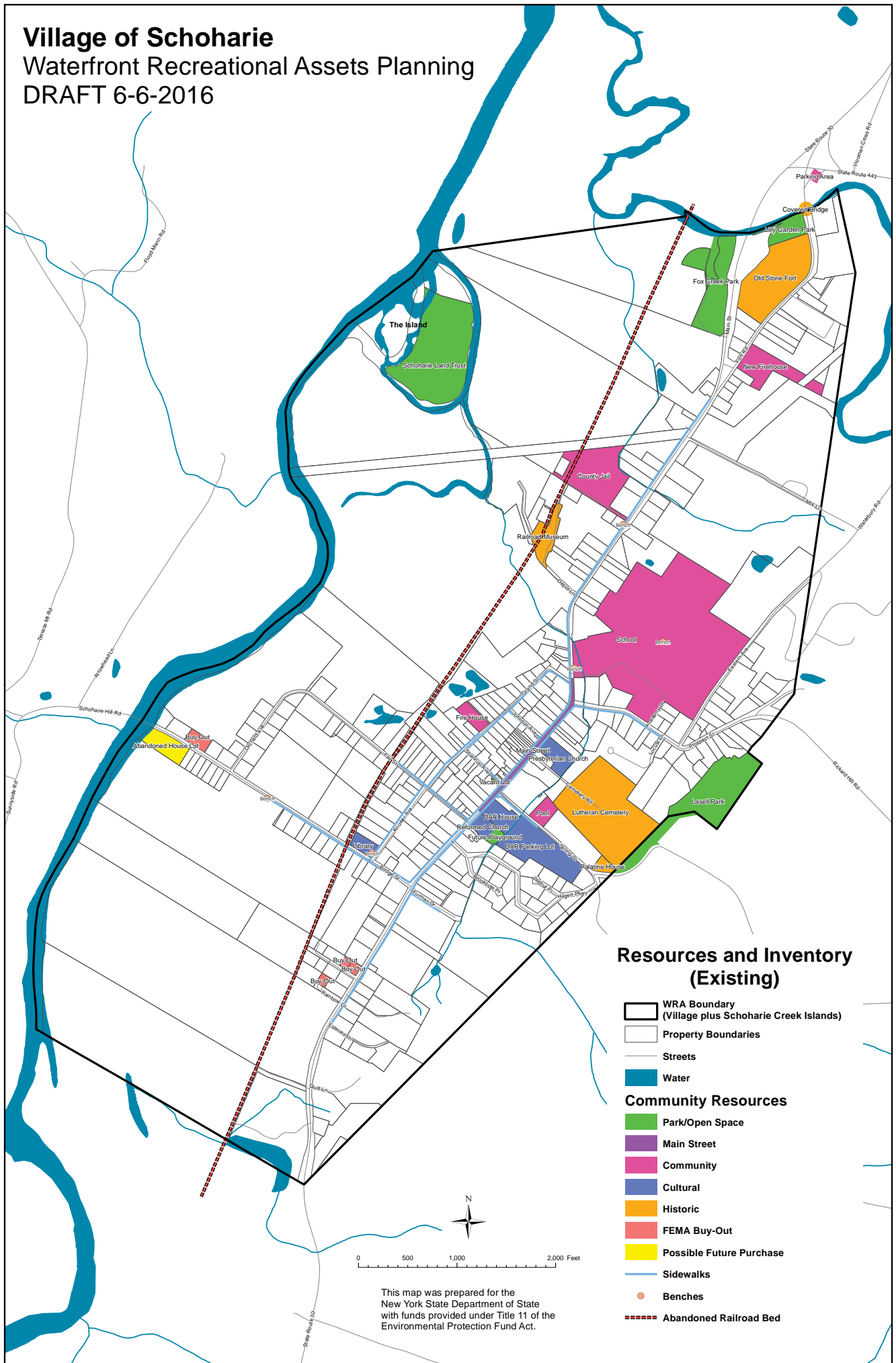


This map was prepared for the New York State Department of State with funds provided under Title 11 of the Environmental Protection Fund Act.

Village of Schoharie

Waterfront Recreational Assets Planning

DRAFT 6-6-2016

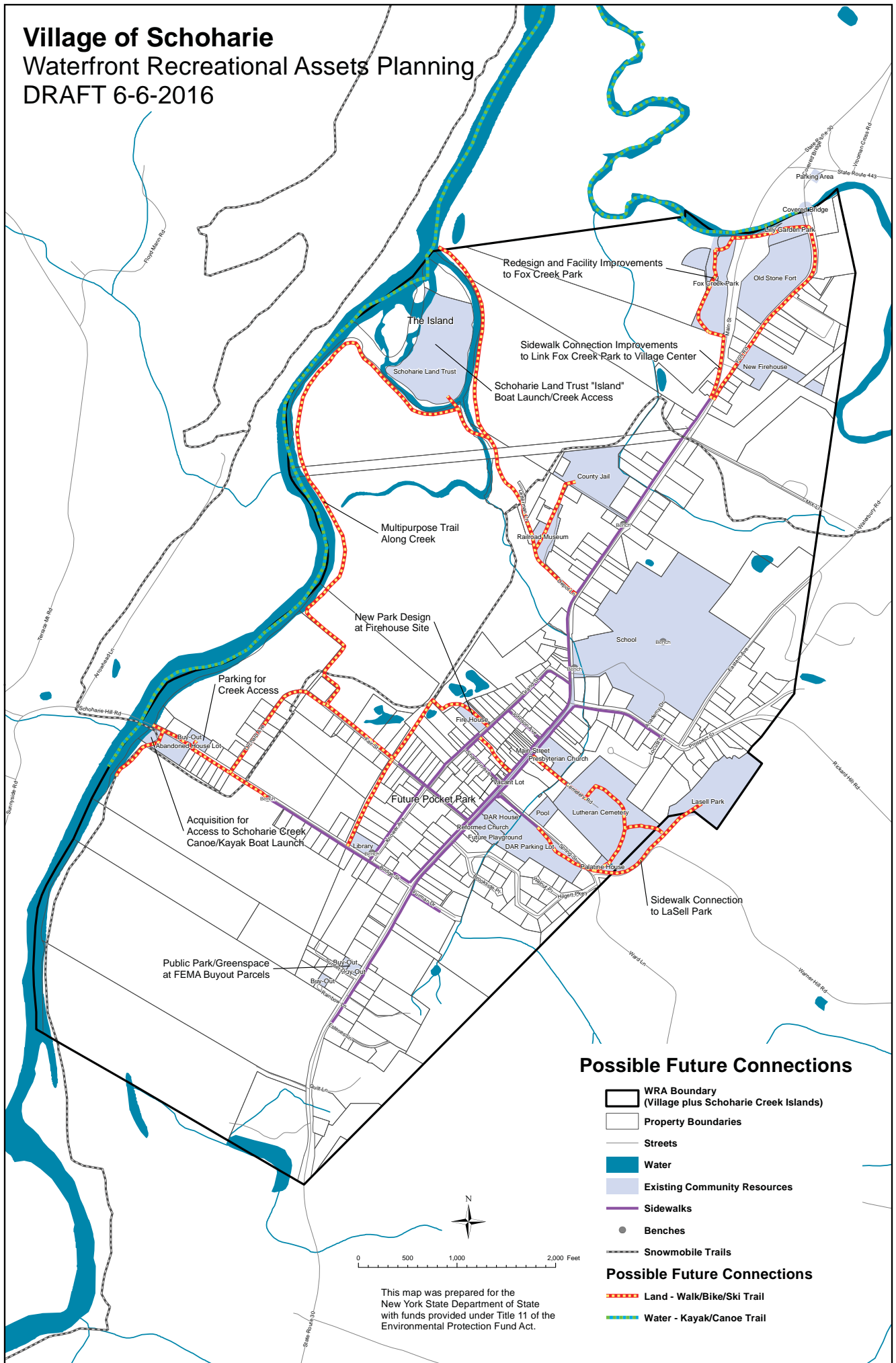


This map was prepared for the New York State Department of State with funds provided under Title 11 of the Environmental Protection Fund Act.

Village of Schoharie

Waterfront Recreational Assets Planning

DRAFT 6-6-2016



Redesign and Facility Improvements to Fox Creek Park

Sidewalk Connection Improvements to Link Fox Creek Park to Village Center

Schoharie Land Trust "Island" Boat Launch/Creek Access

Multipurpose Trail Along Creek

New Park Design at Firehouse Site

Parking for Creek Access

Acquisition for Access to Schoharie Creek/Canoe/Kayak Boat Launch

Public Park/Greenspace at FEMA Buyout Parcels

Possible Future Connections

- WRA Boundary (Village plus Schoharie Creek Islands)
- Property Boundaries
- Streets
- Water
- Existing Community Resources
- Sidewalks
- Benches
- Snowmobile Trails

Possible Future Connections

- Land - Walk/Bike/Ski Trail
- Water - Kayak/Canoe Trail

This map was prepared for the New York State Department of State with funds provided under Title 11 of the Environmental Protection Fund Act.